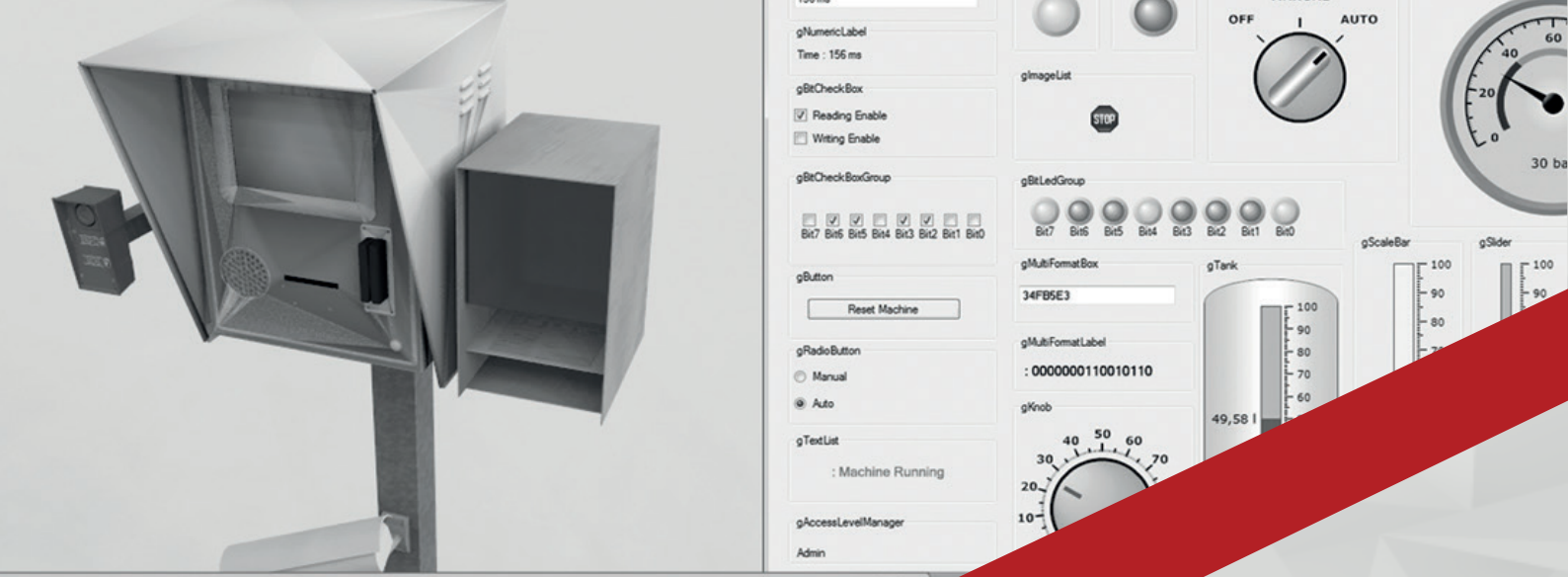




**A D V A N C E D**  
**W E I G H I N G**  
**P L A T F O R M**  
**. S E L F**

Industrial weighing software:  
Automatic access control, vehicle identification, weighing and  
management process within the operational site.





Management ingressi

parametri di ricerca

Data consegna: 13-06-2018 / 13-06-2018

Data documento: 05-06-2018 / 13-06-2018

Tipi documenti: Documenti ingresso

Stato: Da eseguire

AGENZIA: CENSA

DOCUMENTI

StatoDocumento	DataDocumento	NumDocumento	TiRagione_jaco
Da eseguire	13-06-2018	182614	Q4 MANUFACT
Da eseguire	13-06-2018	182615	SIEMENS TRAN
Da eseguire	13-06-2018	182616	SIEMENS TRAN
Da eseguire	13-06-2018	182617	SIEMENS TRAN
Da eseguire	13-06-2018	182618	SIEMENS TRAN
Da eseguire	13-06-2018	182619	SIEMENS TRAN
Da eseguire	13-06-2018	182621	SIEMENS TRAN
Da eseguire	13-06-2018	182622	SIEMENS TRAN
Da eseguire	13-06-2018	182623	SIEMENS TRAN
Da eseguire	13-06-2018	182624	SIEMENS TRAN
Da eseguire	13-06-2018	182625	SIEMENS TRAN
Da eseguire	13-06-2018	182626	SIEMENS TRAN
Da eseguire	13-06-2018	182627	SIEMENS TRAN
Da eseguire	13-06-2018	182628	SIEMENS TRAN
Da eseguire	13-06-2018	182629	SIEMENS TRAN
Da eseguire	13-06-2018	182630	SIEMENS TRAN

DETTAGLIO DOCUMENTO SELEZIONATO

Chiusa	QstCone	ColCone	Giri
0.000	0	0	0

## ADVANCED WEIGHING PLATFORM

Our **AWP.SELF** is a software for access control and traffic management of vehicles delivering and/or collecting industrial products. It also automatically manages all the weighing operations and the printing of invoices and delivery notes. This software enables our customers to centralize their logistics management system (either including or not weighing procedures) by connecting plants situated in different geographical areas.

Moreover, a sophisticated SQL server replication system helps to avoid the most common connectivity problems, thus always guaranteeing a high efficiency. This system is optimized for the hardware DD2050, DD1050 and the new series DD2060, i.e. long-term reliable and versatile electronic weighing terminals produced by Bilanciali Group, which can be installed either outside or inside office type environments.

This software can be fully customized to program the instructions for the truck drivers on the touch screen. In addition, it is possible to customize print layout, control devices (such as barrier gates, traffic lights, cameras) and a wealth of other available options.

With Logisdiade, any delivery note can be issued directly by weight terminals or by a PC Client connected to the system. It is also possible to print invoices afterwards when needed.

Our system is completely DB-Oriented: all the messages and pieces of information exchanged among various devices are managed by a database SQL Server. The system is compatible with all the electronic weighing terminals produced by any manufacturer on the market. The software is expandable by adding modules in order to meet specific needs, with no limits as to the logistics complexity the system is able to handle.

- It enables to significantly accelerate the procedures of vehicle identification and IN/OUT weighing.
- It eliminates the necessity of workers devoted to admitting vehicles and printing documents such as delivery notes and weight tickets.
- It guarantees a high level of site security by not allowing the truck drivers to cross site access lanes to reach the admission office.
- The driver interface walks drivers through the steps of the weighing process while they are sitting in the trucks
- It works 24 hours a day
- The wiring is reduced in comparison with other existing solutions. Our touch screen terminals (both for indoor and outdoor areas) are equipped with PLC so as to manage all the peripheral components involved in the operations.
- It creates a network of devices that can be controlled via LAN (weighing terminals, barrier gates, traffic lights, sensors, photocells, cameras, printers etc.)
- It easily integrates with existing terminals, including them into a whole system monitored via our network (e.g. weight indication and weight ticket printing can be carried out remotely).  
stampa dei dati relativi)

**DESCRIPTION:**

**1. TRAFFIC LIGHT**

The signal indicates the status of the underway operations

**2. INTERCOM SYSTEM**

Either standard or VoIP models are available to support any communication requirement.

**3. SELF SERVICE TOUCH SCREEN DISPLAY**

Its interface is driver friendly and has the unlimited ability to prompt action with color graphics, icons, text. In addition, an extensive range of optional devices are available for installation: i.e. voice guidance, thermal paper receipt printer, documents scanner and many other driver-identification tools.

**4. CONTEXT CAMERA**

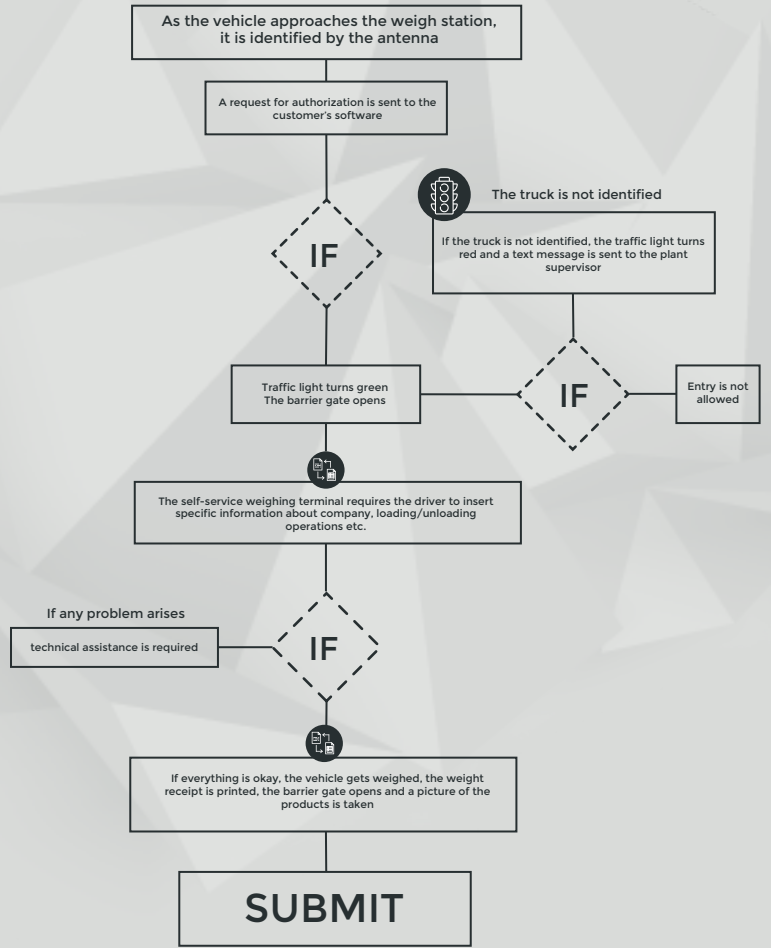
It takes pictures and videos during weighing operations; it also includes pictures of the vehicle plate and of the products carried by the truck.

**5. BARRIER GATES AND PHOTOCELLS**

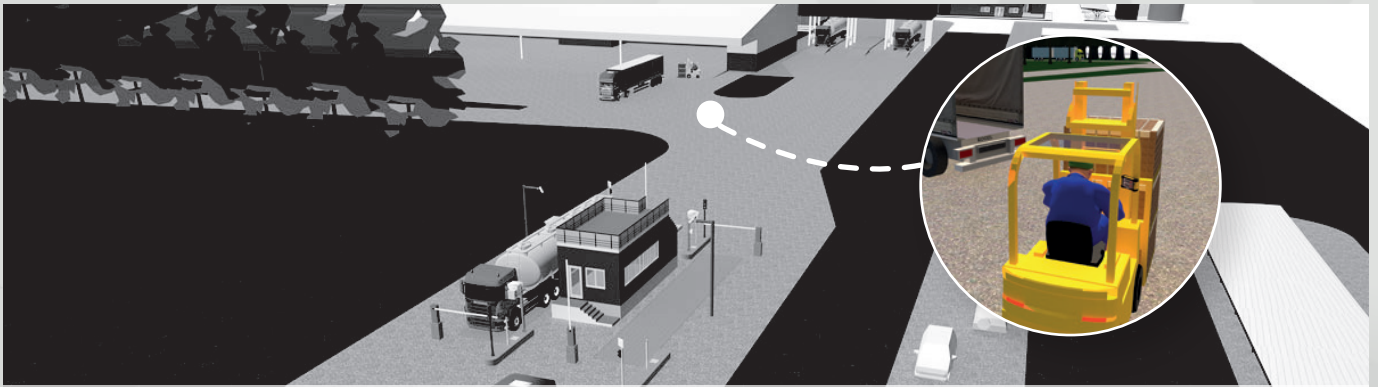
They provide secure control for vehicles entering and leaving the truck scales

**6. ANPR CAMERAS**

They read, recognize and store vehicles plates







**A:** Unmanned 24 hrs working truck scale, automatic access/exit control

**B:** Bulk loading platform fully managed by AWP. PLC

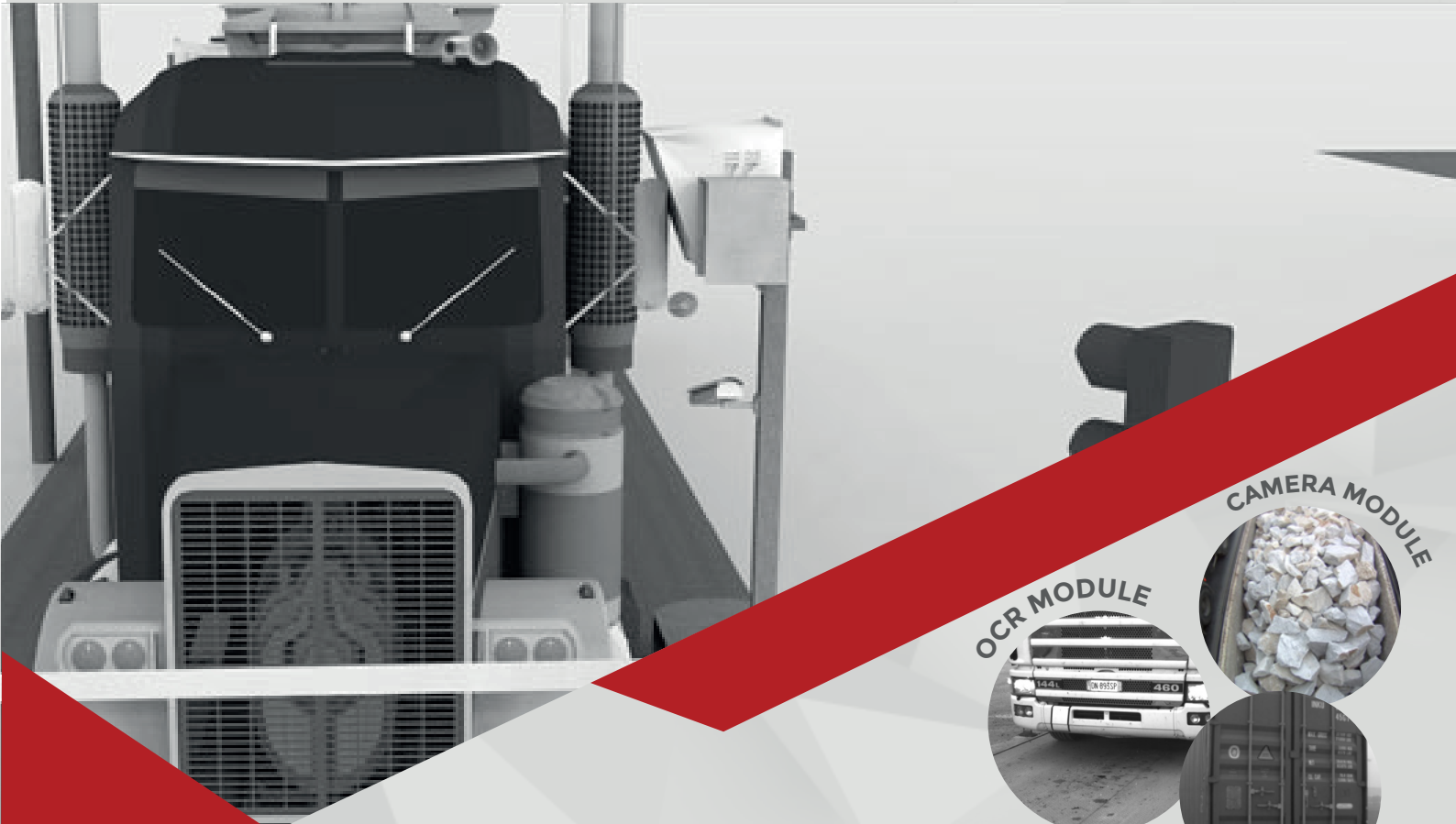
**C:** Palletized products loading station operated via rugged handhelds connected by AWP. SELF



**D:** Waiting yard with truck call system via remote display, SMS or multi-language voice message



**E:** Bulk loading platform, fully managed by AWP. PLC; it can be connected to standard hardware (Siemens, Omron, ABB) and to customers' management systems



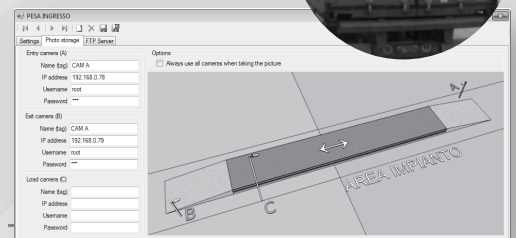
OCR MODULE



CAMERA MODULE



## ADDITIONAL SOFTWARE MODULES



### 1. OCR MODULE

It automatically identifies the vehicle by electronically reading its license plate. This functionality is extremely useful if the traffic flow is intense and the vehicles cannot be provided with UHF tags.

The license plate reading can also automatically retrieve a pre-registered weighing session and it makes the drivers' data entry procedures easier and faster.

The camera can recognize license plates under any light conditions, as it is provided with IR LEDs, and its field of view ranges from 4-25m distances.

### 2. CAMERA MODULE

This software module enables to take pictures of how the weighing process is being carried out. It is possible to connect up to 3 IP cameras in order to provide visual proof of the vehicle weighing and of the right vehicle position on the truck scale. The camera can also record a live video for any operator remotely supervising the weighing.

All the pictures are automatically saved in a FTP and/or cloud area and they are stored together with the weighing session data by the software.

### 3. PRICE LISTS MODULE

It shows prices on the weighing documents after retrieving them from a previously uploaded price list. All the documents can be labelled and grouped as "invoices" or "receipts" and they can be printed in any of the available graphic layouts. Active and passive invoices can be issued as well.

- Price list management by selecting customer, plant, product, first and second carrier
- Flat rate or price by quantity
- Records of prices

## 4. CE MARKING

This module is designed for all the products that require CE marking and UNI EN certifications: it collects, stores and manages data that are fundamental to sell those specific products.



## 5. HANDHELDS MODULE

All the software functionalities are accessible through a user-friendly app that can be installed either on Android or Apple devices, thus making data and devices available anywhere anytime. Moreover, this interface is fully customizable according to customers' preferences and needs.



## 6. DOCUMENTS SCANNER

Any kind of identity documents, delivery notes and certificates can be scanned and saved at the weighing terminals, thus turning the interactive kiosks into fully self-service ones. Once scanned, the documents are linked with the weighing data and can be transferred via cloud computing.



## 7. WAITING LINES MANAGEMENT

This module enables to automatically manage vehicles waiting in the plant yard. This system can call vehicles by means of remote displays, SMS, or multi-language voice message. In addition, the load operators can modify the waiting line should the need arise







## SOFTWARE MINIMUM REQUIREMENTS

### • SERVER REQUIREMENTS:

**DATABASE:**

Microsoft SQL Server 2008 R2 Express version or superior.

**OPERATING SYSTEM:**

Windows 7 or superior or Windows Server 2003 or superior

**HARDWARE:**

1 dual core processor 2 GHz, 4 Gbyte RAM, 50 Gbyte HDD

### • CLIENT WINDOWS REQUIREMENTS:

**OPERATING SYSTEM:**

Windows 7 or uppe or Windows Server 2003 or superior

**HARDWARE:**

1 Atom processor 1.6 GHz, 4 Gbyte RAM, 200 Mbyte HDD

### • APP REQUIREMENTS:

**OPERATING SYSTEM:**

Android 6.00 version or superior 2 Gbyte RAM

# ADVANCED WEIGHING PLATFORM

Phone: + 1 (321) 332 - 7934

[www.is4automation.com](http://www.is4automation.com)

[IS4 Automation](#) | [LinkedIn](#)

20 North Orange Avenue

11 th Floor, Unit 1100

Orlando, FL 32801, USA

